

## **Attention! Please read carefully before using the software!**

By using the software, you agree to be bound by the terms of the following software license agreement.

### **END USER LICENCE AGREEMENT - ALL COUNTRIES EXCEPT UNITED STATES**

#### **1. License**

In return for payment of a LICENSE included in the purchase price of a SAT hardware product and your agreement to respect the terms of this LICENSE, SAT shall grant you, the LICENSEE, a non-exclusive right to use this copy of the SOFTWARE in object code.

This LICENSE shall be granted on the express condition that SAT retains sole proprietary rights to this SOFTWARE.

This LICENSE shall not constitute sale of the original SOFTWARE or any copy thereof.

The LICENSEE shall only own the magnetic medium on which the SOFTWARE is initially or subsequently stored or installed.

#### **2. Restrictions on the right of use**

The LICENSEE shall only be entitled to make one backup copy of the SOFTWARE.

The copyright notice shall be reproduced and included on the backup copy.

The LICENSEE shall be entitled to physically transfer the SOFTWARE from one computer to another, but only on condition that said SOFTWARE is in use on only one computer at any one time. It shall be forbidden to transfer the SOFTWARE electronically from one computer to another on a network or to distribute copies of the SOFTWARE or the accompanying documentation to third parties. Any modification, incorporation, adaptation, translation, decompilation, disassembly or generation of other programs derived from the SOFTWARE as well as any modification, adaptation, translation or editing of programs inspired by the documentation shall be strictly forbidden.

Any non-authorized reproduction of the SOFTWARE, including its modification, combination or inclusion in another software or the accompanying documentation shall be strictly forbidden.

The LICENSE shall only be granted to the LICENSEE and may not be transferred to a third party without prior written agreement of SAT. Any recipient of an authorized transfer shall comply with the conditions of this LICENSE and the limited warranty. Anything else not expressly authorized by SAT shall be forbidden.

#### **3. Termination of agreement**

This LICENSE shall remain in force until terminated without advance warning by SAT if the LICENSEE does not comply with the terms of the LICENSE. The LICENSEE shall then immediately destroy all documentation and all copies of the SOFTWARE.

#### **4. Limited warranty**

The SOFTWARE and the accompanying documentation shall be supplied in the state in which they are found without any warranty, in particular as far as utilization or the results arising from utilization of the SOFTWARE or the accuracy and reliability of the documentation are concerned. Any risks pertaining to the results and performance of the SOFTWARE shall be borne by the LICENSEE.

The above shall represent the only warranty provided by SAT regarding the SOFTWARE and shall exclude all other warranties, either express or implied, including but not limited to implied warranties of merchantability and fitness for a particular purpose.

Any information or advice given orally or in writing by SAT, its dealers, distributors, agents or employees shall not represent any warranty nor extend in any way to this warranty.

On no account shall SAT or anyone else involved in the creation, production or delivery of this SOFTWARE be liable for any other direct or indirect damages (including damages for loss of business profits, business interruption, loss of business information, or other pecuniary loss) arising out of the use or inability to use this SOFTWARE, even if SAT has been advised of the possibility of such damages.

#### **5. Acceptance**

You hereby certify that you have read this agreement, in particular the section relating to limited warranty. You have understood the terms and promise to respect them. You also recognize that this is a full and exclusive agreement binding upon both parties and that it replaces any previous offer or agreement, either made orally or in writing, and any other communication between the parties as regards the SOFTWARE.

This LICENSE is governed by the laws of France. Any disputes shall be submitted to the courts in Paris.

## **END USER LICENCE AGREEMENT - UNITED STATES**

### **1. License**

The application, demonstration, system and/or other software accompanying this License, whether on disk, in read only memory, or any other media (the "Software") and related documentation are licensed to you by SAT. You own the disk on which the Software is recorded but SAT and/or SAT's Licensors retain title to the Software and related documentation. This License allows you to use the Software on a single computer and make one copy of the Software in machine-readable form for backup purposes only. You must reproduce on such copy the SAT copyright notice and any other proprietary legends that were on the original copy of the Software. You may transfer all your license rights in the Software, the related documentation and a copy of this License to another party, provided the other party reads and agrees to accept the terms and conditions of this License.

### **2. Restrictions**

The Software contains copyrighted material, trade secrets and other proprietary material and in order to protect them you may not decompile, reverse engineer, disassemble or otherwise reduce the Software to a human-perceivable form. You may not modify, network, rent, lease, loan distribute or create derivative works based upon the Software in whole or in part. You may not electronically transmit the Software from one computer to another or over a network.

### **3. Termination**

This License is effective until terminated. You may terminate this License at any time by destroying the Software and related documentation and all copies thereof. This License will terminate immediately without notice from SAT if you fail to comply with any provision of this License. Upon termination you must destroy the Software and related documentaion and all copies thereof.

### **4. Export Law Assurances**

You agree and certify that neither the Software nor any other technical data received from SAT, nor the direct product thereof, will be exported except as authorized and as permitted by the laws and regulations of the United States and/or the country of purchase.

### **5. Government End Users**

If you are acquiring the Software on behalf of any unit or agency of the United States Government, the following provisions apply. The Government agrees:

- (i) If the Software is supplied to the Department of Defense (DoD), the Software is classified as "Commercial Computer Software" and the Government is acquiring only "restricted rights" in the Software and its documentation as that term is defined in Clause 252.227-7013(c)(1) of the DFARS; and
- (ii) If the Software is supplied to any unit or agency of the United States Government other than DoD, the Government's rights in the Software and its documentation will be as defined in Clause 52.227-19(c)(2) of the FAR, or in the case of NASA, in Clause 18-52.227-86(d) of the NASA Supplement to the FAR.

### **6. Limited Warranty on Media**

SAT warrants the disks on which the Software is recorded to be free from defects in materials and workmanship under normal use for a period of ninety (90) days from the date of purchase as evidenced by a copy of the receipt. SAT's entire liability and your exclusive remedy will be replacement of the disk not meeting SAT's limited warranty and which is returned to SAT or a SAT-authorized representative with a copy of the receipt. SAT will have no responsibility to replace a disk damaged by accident, abuse or misapplication. ANY IMPLIED WARRANTIES ON THE DISKS, INCLUDING THE IMPLIED WARRANTIES OF MERCHANTABILITY AND FITNESS FOR A PARTICULAR PURPOSE, ARE LIMITED IN DURATION TO NINETY (90) DAYS FROM THE DATE OF DELIVERY. THIS WARRANTY GIVES YOU SPECIFIC LEGAL RIGHTS, AND YOU MAY ALSO HAVE OTHER RIGHTS WHICH VARY FROM STATE TO STATE.

### **7. Disclaimer of Warranty on Software**

You expressly acknowledge and agree that use of the Software is at your sole risk. The Software and related documentation are provided "AS IS" and without warranty of any kind and SAT and SAT's Licensor(s) (for the purposes of provisions 7 and 8, SAT and SAT's Licensor(s) shall be collectively referred to as "SAT") EXPRESSLY DISCLAIM ALL WARRANTIES, EXPRESS OR IMPLIED, INCLUDING, BUT NOT LIMITED TO, THE IMPLIED WARRANTIES OF MERCHANTABILITY AND FITNESS FOR A PARTICULAR PURPOSE. SAT DOES NOT WARRANT THAT THE FUNCTIONS CONTAINED IN THE SOFTWARE WILL MEET YOUR REQUIREMENTS, OR

THAT THE OPERATION OF THE SOFTWARE WILL BE UNINTERRUPTED OR ERROR-FREE, OR THAT DEFECTS IN THE SOFTWARE WILL BE CORRECTED, FURTHERMORE, SAT DOES NOT WARRANT OR MAKE ANY REPRESENTATIONS REGARDING THE USE OR THE RESULTS OF THE USE OF THE SOFTWARE OR RELATED DOCUMENTATION IN TERMS OF THEIR CORRECTNESS, ACCURACY, RELIABILITY, OR OTHERWISE. NO ORAL OR WRITTEN INFORMATION OR ADVICE GIVEN BY SAT OR A SAT-AUTHORIZED REPRESENTATIVE SHALL CREATE A WARRANTY OR IN ANY WAY INCREASE THE SCOPE OF THIS WARRANTY. SHOULD THE SOFTWARE PROVE DEFECTIVE, YOU (AND NOT SAT OR SAT-AUTHORIZED REPRESENTATIVE) ASSUME THE ENTIRE COST OF ALL NECESSARY SERVICING, REPAIR OR CORRECTION. SOME STATES DO NOT ALLOW THE EXCLUSION OF IMPLIED WARRANTIES, SO THE ABOVE EXCLUSION MAY NOT APPLY TO YOU.

#### **8. Limitation of Liability**

UNDER NO CIRCUMSTANCES INCLUDING NEGLIGENCE, SHALL SAT BE LIABLE FOR ANY INCIDENTAL, SPECIAL OR CONSEQUENTIAL DAMAGES THAT RESULT FROM THE USE OR INABILITY TO USE THE SOFTWARE OR RELATED DOCUMENTATION, EVEN IF SAT OR A SAT-AUTHORIZED REPRESENTATIVE HAS BEEN ADVISED OF THE POSSIBILITY OF SUCH DAMAGES. SOME STATES DO NOT ALLOW THE LIMITATION OR EXCLUSION OF LIABILITY FOR INCIDENTAL OR CONSEQUENTIAL DAMAGES SO THE ABOVE LIMITATION OR EXCLUSION MAY NOT APPLY TO YOU.

In no event shall SAT's total liability to you for all damages, losses, and causes of action (whether in contract, tort (including negligence, or otherwise) exceed the amount paid by you for the Software.

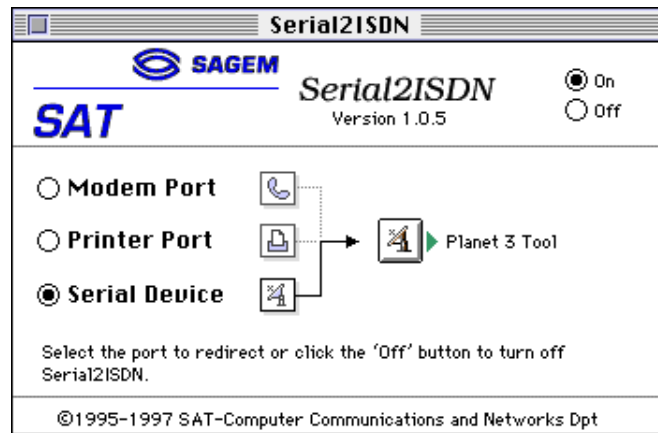
#### **9. Controlling Law and Severability**

This License shall be governed by and construed in accordance with the laws of the France. If for any reason a court of competent jurisdiction finds any provision of this License, or portion thereof, to be unenforceable, that provision of the License shall be enforced to the maximum extent permissible so as to effect the intent of the parties, and the remainder of this License shall continue in full force and effect.

#### **10. Complete Agreement**

This License constitutes the entire agreement between the parties with respect to the use of the Software and related documentation, and supersedes all prior or contemporaneous understandings or agreements, written or oral, regarding such subject matter. No amendment to or modification of this License will be binding unless in writing and signed by a duly authorized representative of SAT.

# Serial2ISDN User's Guide



Edition May 1997

©1995 -97 SAT. All rights reserved

SAT-SAGEM Group  
DRT- Computer Communications and Network and Department  
11 rue Watt  
75013 Paris  
FRANCE

All product names mentionned in this manual for information or identification only may be registred trademarks.

# Chapter 1 - Introduction to Serial2ISDN

## Important note

**This software ONLY runs on hardware designed by SAT. Don't try to use it on other peripherals.**

This manual must be read in sequence, apart from the appendices (chapters 1 to 6).

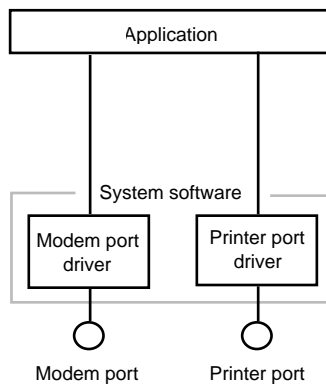
The appendices at the end of the manual deal with special situations (errors, specific configurations, etc.). You may need to read parts of them, depending on your requirements.

Serial2ISDN is a software tool that enables applications capable of using a modem (AppleTalk Remote Access, Timbuktu Remote...) **to use the SAT Communications Toolbox hardware, such as SAT-ISDN cards (Planet-ISDN, Meet-Me, GeoPort adapter) , or SAT-TheWave software connection tool.**

For example, when a software package such as AppleTalk Remote Access that is limited on the serial port to 57,6 Kbits/s is used with the Planet-ISDN card, its communication capacities are increased to 64 Kbits/s or 128 Kbits/s.

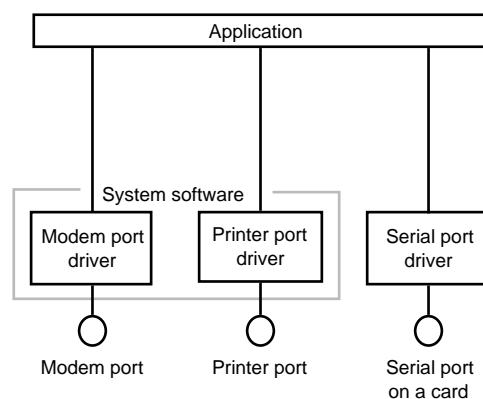
## General principles

Standard Macintoshes have 2 serial ports: the Modem Port and the Printer Port. Each port is managed by part of the system software called the Driver. Applications use these 2 ports by means of their respective Drivers.



*Using standard serial ports*

Some software, such as AppleTalk Remote Access, are able to use additional serial ports by means of their drivers (serial port card).



*Using extended serial ports*

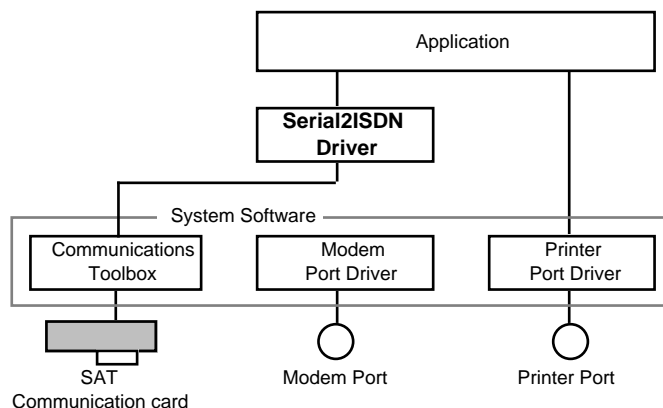
In 1990, Apple Computer introduced a new way of communicating using the Communications Toolbox. The Communications Toolbox extends the "Port Driver/Serial Port" concept to all types of communications. The communication peripherals (cards, input/output, networks) are managed by their respective connection tools.

Unfortunately, many software packages did not adapt to this communication mode, and remain fixed on the serial ports. For example, this is the case for AppleTalk Remote Access.

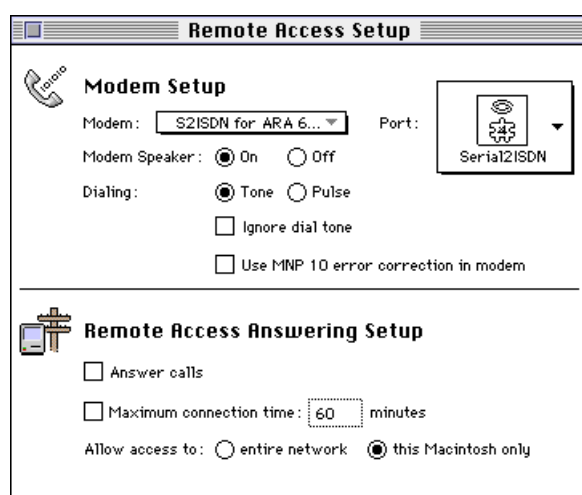
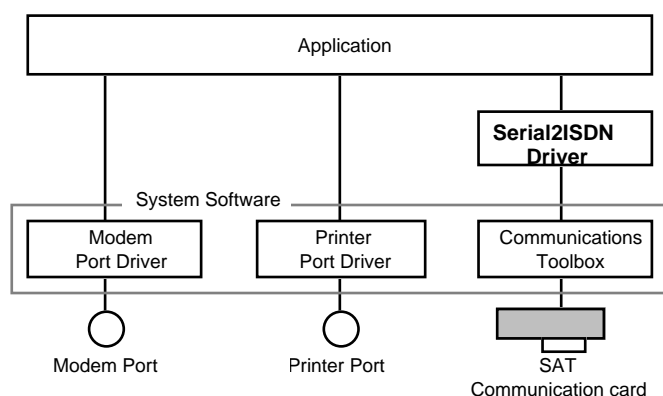
The purpose of Serial2ISDN is to enable these software products to overcome the limitations of the serial ports, and to run all SAT hardware through the Communication ToolBox.

Serial2ISDN can work in two different ways:

**1) it can replace the Modem or Printer Port Driver**



**2) it can install a new Driver for a new virtual serial port**



*New Driver seen by AppleTalk Remote Access*

In addition, Serial2ISDN simulates the characteristics of a Hayes modem controlled by AT commands. Serial2ISDN will then translate AT commands into calls to the Communications Toolbox.

## Hardware required

To use Serial2ISDN you need:

- A Macintosh micro-computer.
- The operating system (version 7.0.x or greater) installed on your hard disk.
- A SAT communication peripheral managed by the Communications Toolbox, such as an Planet-ISDN card, Meet-Me ISDN Card, Planet-ISDN GeoPort Adapter, etc.
- The Communications Toolbox.  
It is included in the 7.0.x operating system.
- A communication software package (AppleTalk Remote Access, Timbuktu, MacPPP, etc.) that is only capable of using serial ports.

**Note:** when the Macintosh starts, the Serial2ISDN Driver is loaded into the system's memory zone, where it takes up about 70 K.

## Chapter 2 - Installing Serial2ISDN

### Installing the software

- Copy the Serial2ISDN file onto the System Folder of your start-up disk.  
The Finder will automatically place the file in the Control Panels folder.
- Restart your Macintosh

### Removing the software

To remove the Serial2ISDN software once it has been installed, simply take it out of the Control Panel Folder of the System Folder on your start-up disk.

The removal operation is effective when you reboot your machine.

## Chapter 3 - The Serial2ISDN Control Panel

### Function of the Serial2ISDN Control Panel

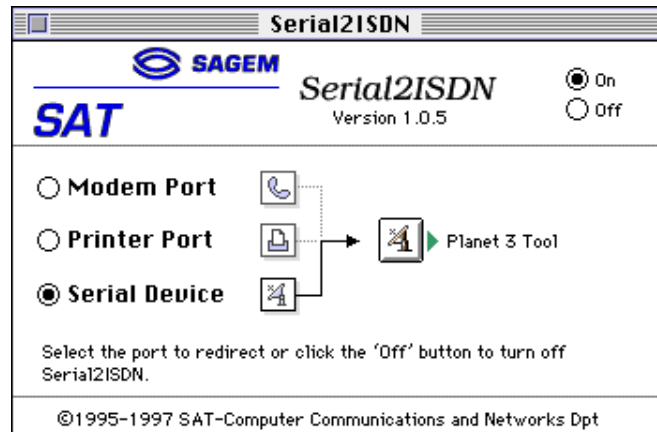
The Serial2ISDN Control Panel is used to define which serial port is redirected or created, and to set up the connection tool managed by Serial2ISDN, depending on the SAGEM communication hardware used.

### Accessing the Serial2ISDN Control Panel

The Control Panel is accessed via the "Control Panels" folder in the "System" folder by double-clicking on the "Serial2ISDN" icon.

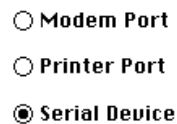
### Using the Serial2ISDN Control Panel

The main Serial2ISDN window is then displayed:



*Serial2ISDN Control Panel*

The on/off radio button activate /desactivate Serial2ISDN on the fly, you don't need to restart your Macintosh. If Serial2ISDN is active at startup it will either replace one of the serial port drivers on the Macintosh or create a new port.

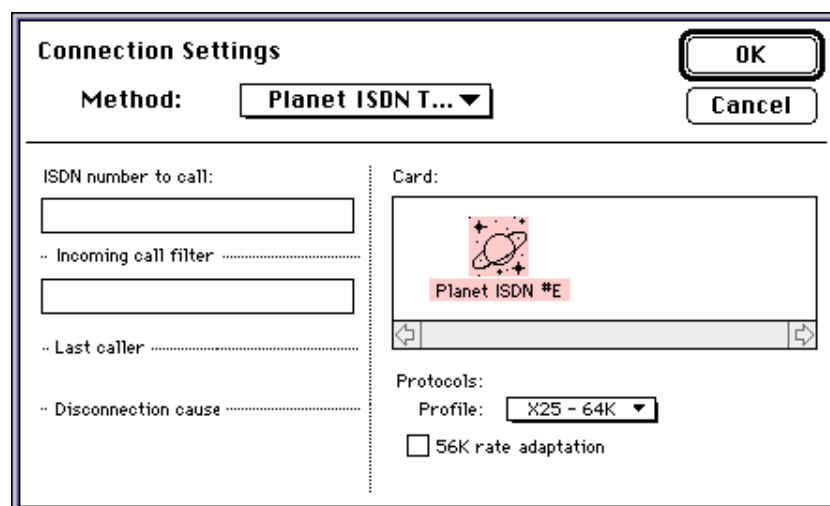


These radio buttons are used to determine whether Serial2ISDN must redirect one of the Macintosh serial ports, or create a new one (see Chapter 1 - General Principles).

## Setting up a SAT connection tool

By clicking on the "Satellite " button, you can configure the Communications Toolbox peripheral that will be used. When you click on this button, the standard dialog for choosing a Communications Toolbox connection tool is displayed. You can then define the configuration settings specific to your SAT peripheral.

**Warning!** You must select a connection tool developed by SAT.



*Planet-ISDN Tool*

The ATD command, normally used to generate an outgoing call, will automatically replace the contents of the call number fields in all SAT connection tools (Planet-ISDN Tool, Meet-Me ISDN Tool, ISDN GeoPort Tool ) with the call number that follows ATD. You don't need to fill in the "ISDN number to call" field.

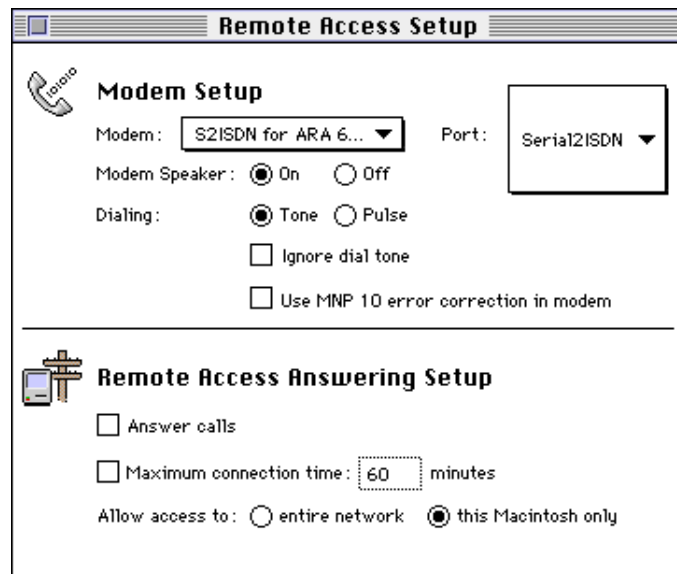


## Chapter 4 - Serial2ISDN with AppleTalk Remote Access

Serial2ISDN features specific scripts for ARA versions 2.0.1 up to 2.1: one of them uses the configuration you set up in the Serial2ISDN Control panel, whereas the four other ones lead to X25 connections and allow you to make ARA connections over ISDN.

You select a Serial2ISDN for ARA script when setting up your modem connection, according to your communication needs, and **without having to modify the settings of the Serial2ISDN Control Panel**.

From the Apple menu, select the "Remote Access Setup" Control Panel. The following window appears:



*Remote Access Setup Control Panel*

Select the appropriate script from the "Modem" pull-down menu, in the "Modem Setup" area. The five available scripts are "S2ISDN for ARA", "S2ISDN for ARA 64K" and "S2ISDN for ARA 128K", as well as "S2ISDN for ARA 56K" and "S2ISDN for ARA 112K" for communications with the United States and Japan.

From the "Port" pull-down menu, select Serial2ISDN. Then close the Control Panel to save the changes.

For further information on how to make ARA connections, please refer to the AppleTalk Remote Access Reference Guide.

## Chapter 5 - Serial2ISDN with PPP

Most PPP connections over ISDN are in synchronous mode, whereas PPP software such as MacPPP, FreePPP or OpenTransport PPP, are based on the asynchronous mode while using the serial port.

Serial2ISDN features scripts and new Hayes commands that make the conversion of PPP synchronous to asynchronous mode and vice-versa, thus enabling your PPP software to connect over the ISDN network.

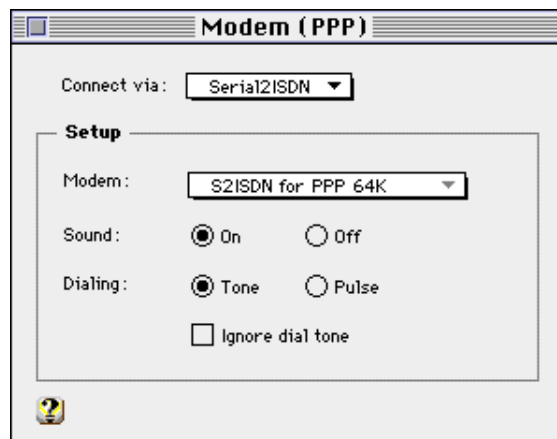
**Important:** to do so, you must first make sure that your Internet Provider offers ISDN access to his server.

As well as for ARA, the scripts and AT commands can be used **without having to modify the settings of the Serial2ISDN Control Panel**. They lead to HDLC synchronous PPP connections over ISDN.

Depending on your system configuration, you will either use one of the two scripts available for OpenTransport/PPP, or type in one of the two Serial2ISDN AT Commands, for software requiring a manual configuration.

## Using OpenTransport/PPP 1.0

From the Apple menu, select the "Modem" Control Panel. The following window appears:



*Modem (PPP) Control Panel*

From the "Connect via" pull-down menu, select Serial2ISDN.

Select the appropriate script from the "Modem" pull-down menu, in the "Setup" area. The two available scripts are "S2ISDN for PPP 64K" and "S2ISDN for PPP 56K" for communications with the United States and Japan. Then close the Control Panel to save the changes.

## Using Config PPP

From the Apple Menu, select the "Config PPP" Control Panel. The following window appears:



*ConfigPPP Control Panel*

From the "Port Name" pull-down menu, select Serial2ISDN.

Then click on the "Config..." radio button. The following window appears:

PPP Server Name:

Port Speed:

Flow Control:

☒ Tone Dial ☐ Pulse Dial

Phone num

Modem Init

Modem connect timeout:  seconds

*ConfigPPP Control Panel options*

In the "Modem init" field, type in the Hayes command that will allow you to make a PPP synchronous connection over ISDN. Two AT Command are available: "ATZ\*PPP64K" and "ATZ\*PPP56K" for the communications with the United States and Japan. Click on "Done", then close the ConfigPPP Control Panel to save the changes.

For information concerning the different options and fields of Config PPP, as well as how to make a PPP connection, please contact your Internet provider or your network administrator.

## Chapter 6 - Use within an application

The following examples were executed with a terminal emulator (Red Ryder) that uses the Modem Port redirected by Serial2ISDN to the Planet-ISDN card.

### Call

If the tool has been correctly configured, the ATD function will be sufficient:

#### Successful connection:

```
ATD92960100
CONNECT#
```

#### Unsuccessful connection:

```
ATD92960100
NO CARRIER
```

### Answer

The default setting for Serial2ISDN is the automatic answer mode. The manual answer mode can be set using the command `ATS0=0`. In this case, the incoming call is indicated by the message RING, and the communication software must accept the incoming call with the command ATA.

#### Automatic answer:

```
RING
CONNECT
```

#### Manual answer:

```
ATS0=0
OK
RING
ATA
CONNECT
```

## Disconnection

The current communication can be disconnected in three different ways:

- by closing the serial port used
- by requesting fall of the DTR on the serial port used
- by using the ATH command, having first gone back to command mode (by typing +++)

### Disconnection using the ATH command:

```
CONNECT
OK
ATH          (ATH must be keyed in)
OK
```

## Appendix 1 - AT commands used by Serial2ISDN

This appendix gives a list of AT commands accepted by Serial2ISDN and the effects they have.

<b>ATA</b>	To answer an incoming call in manual answering mode.
<b>ATD</b>	To generate an outgoing call. Generally followed by a call number.
<b>ATH</b>	To reject an incoming call, or cut a current call.
<b>ATO</b>	To return to data transmission mode if +++ was typed to go to command mode.
<b>ATS</b>	To position the registers. Only the Ø register is accepted. ATSØ=Ø puts Serial2ISDN in manual answering mode, ATSØ=x, where x is different from Ø puts Serial2ISDN in automatic answering mode.
<b>AT&amp;ARA</b>	This special AT comand MUST BE ONLY USED in a script for Apple Remote Access. It optimizes the transfer performance by using the ARA Protocol on ISDN

Serial2ISDN does not accept the other AT commands but still returns the "OK" message to the terminal.

## Appendix 2 - Messages and problems

This appendix gives a list of the messages and problems that Serial2ISDN can display, and their probable causes.

- **Impossible to initialize Communications Toolbox!**

This problem is typically caused by a system malfunction following a serious error in an application. If the problem persists when you have restarted, re-install a clean system.

- **Insufficient memory to use configured connection tool!**

This problem concerns the connection tool. Change the connection tool. If the problem persists with other tools, it is probably because an extension at start-up takes up more memory than was intended by its designer. Try to remove this additional extension and re-start the machine.

- **No connection tool available!**

You have not installed a SAT Communications Toolbox hardware. Install them and configure Serial2ISDN.

---